

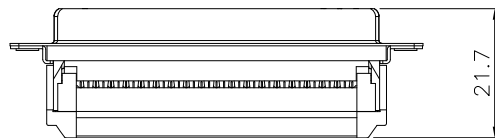
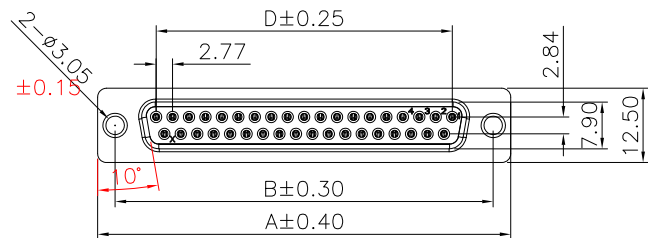
1

2

3

4

5



Specifications:

Current Rating: 1A AC,DC

Voltage Rating: 250V AC,DC

Contact Resistance: 20m ohm.Max

Insulation Resistance: 1000M ohm.Min

Withstanding Voltage: 500V AC/Minute

Operating Temperature Range: -40°C ~ +105°C

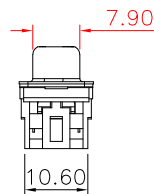
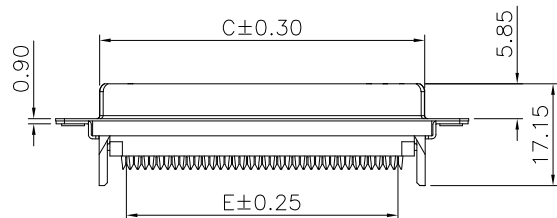
Material:

Insulator: PBT(UL94V-0)

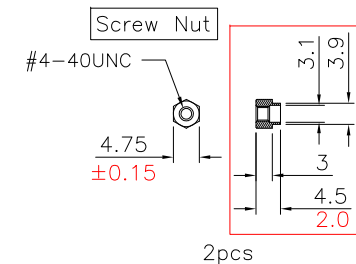
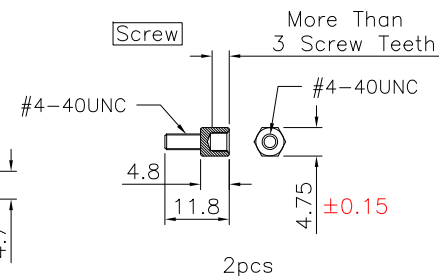
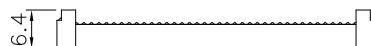
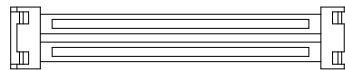
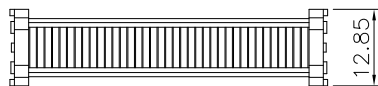
Insulator Color: Black **Not mentioned**

Contact: Brass, Gold Plated Over Nickel

Shell: Spcc, Nickel Plated



Circuits	Dim									
	A	prior 20/06	B	prior 20/06	C	prior 20/06	D	prior 20/06	E	prior 20/06
9	30.80	30.80	25.00	25.00	16.35	16.35	11.08	11.08	10.16	10.16
15	39.14	39.14	33.30	33.30	24.75	24.75	19.39	19.39	17.78	17.78
25	53.05	53.05	47.04	47.04	38.35	38.35	33.24	33.24	30.48	30.48
37	69.32	69.32	63.50	63.50	54.75	54.75	49.86	49.86	45.72	45.72



Note: Dimension in red represents old dimension

RoHS Compliant

				DRAWN:	GENERAL TOLERANCE: .X=±0.30 ±0.20 .XX=±0.20 ±0.15	CnC Tech Industrial Cable and Connector Technology	
				CHECKED:	UNIT: MM SCALE: 1:1		DESCRIPTION: D-SUB IDC FEMALE FLAT CABLE CONNECTOR
				APPROVAL:	SHEET: 1 / 1	PART NO:	A4
REV	DATE	FILE	BY		PROJECTION:	400F0-XX-1-004S	
	05-FEB-2020						